

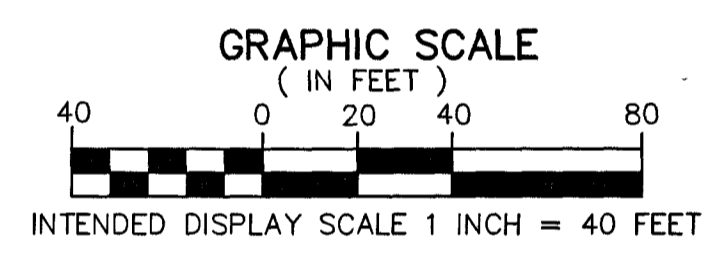
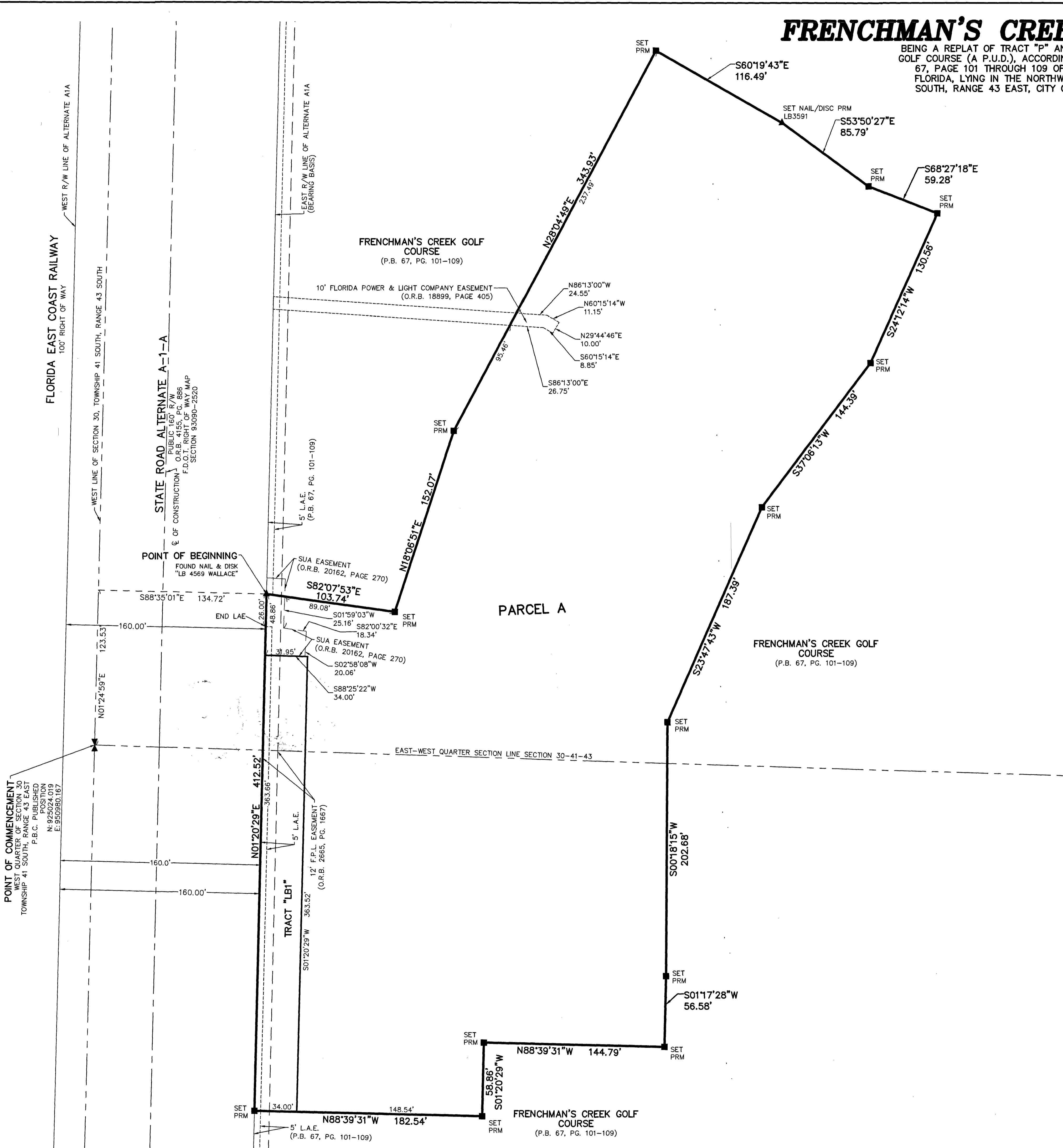
FRENCHMAN'S CREEK OPERATIONS CENTER

BEING A REPLAT OF TRACT "P" AND A PORTION OF TRACT "B", FRENCHMAN'S CREEK GOLF COURSE (A P.U.D.), ACCORDING TO THE PLAT THEREOF, AS RECORDED IN PLAT BOOK 67, PAGE 101 THROUGH 109 OF THE PUBLIC RECORDS OF PALM BEACH COUNTY, FLORIDA, LYING IN THE NORTHWEST ONE-QUARTER OF SECTION 30, TOWNSHIP 41 SOUTH, RANGE 43 EAST, CITY OF PALM BEACH GARDENS, PALM BEACH COUNTY, FLORIDA

THIS INSTRUMENT PREPARED BY
DAVID P. LINDLEY
OF
CAULFIELD & WHEELER, INC.
SURVEYORS - ENGINEERS - PLANNERS
7900 GLADES ROAD, SUITE 100
BOCA RATON, FLORIDA 33434 - (561)392-1991
CERTIFICATE OF AUTHORIZATION NO. LB3591

17

SHEET 2 OF 2



LEGEND/ABBREVIATIONS:

- CB - CHORD BEARING
- CD - CHORD DISTANCE
- F.D.O.T. - FLORIDA DEPARTMENT OF TRANSPORTATION
- L.A.E. - LIMITED ACCESS EASEMENT
- O.R.B. - OFFICIAL RECORD BOOK
- P.B. - PLAT BOOK
- PG(S). - PAGE(S)
- AVE - AVENUE
- ℄ - CENTERLINE
- E - EASTING (WHEN USED WITH COORDINATES)
- LBE - LANDSCAPE BUFFER EASEMENT
- N - NORTHING (WHEN USED WITH COORDINATES)
- U.E. - UTILITY EASEMENT
- LB - LICENSED BUSINESS
- NAD - NORTH AMERICAN DATUM
- PRM - PERMANENT REFERENCE MONUMENT
- R/W - RIGHT-OF-WAY
- SUA - SEACOAST UTILITY AUTHORITY
- 30-43-41 - SECTION 30, TOWNSHIP 41 SOUTH, RANGE 43 EAST
- PRM - DENOTES PERMANENT REFERENCE MONUMENT SET 5/8" IRON ROD WITH PLASTIC CAP STAMPED "C&W PRM LB3591" UNLESS OTHERWISE NOTED
- ▲ - DENOTES SET PERMANENT REFERENCE MONUMENT NAIL AND DISC STAMPED "PRM" LB#3591
- ✕ - 1/4 SECTION CORNER
- ⊕ - SECTION CORNER